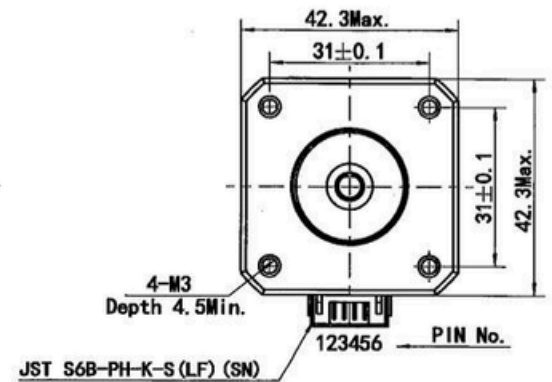
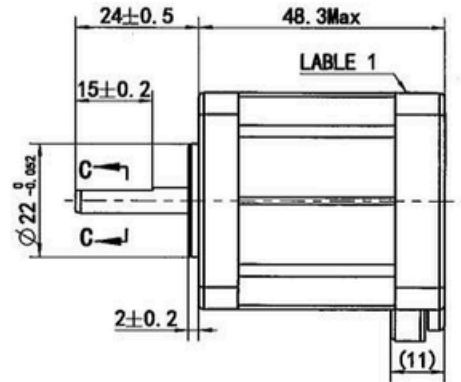
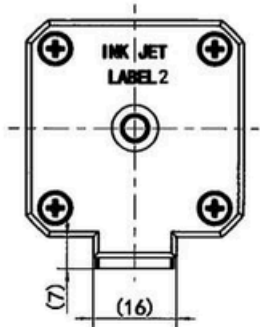
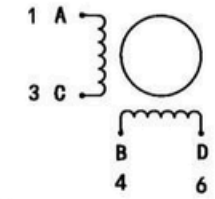


MS17HD6P4150



Wiring Diagram



Exciting Sequence vs. Direction of Rotation

| STEP | A | B | C | D | CCW |
|------|---|---|---|---|-----|
| 1 | + | + | - | - | ↑ |
| 2 | - | + | + | - | |
| 3 | - | - | + | + | |
| 4 | + | - | - | + | |

Clockwise view from mounting side

| | |
|----------------------|---|
| 1. Number of Phase | 2 |
| 2. Step Angle | 1.8° |
| 3. Rated Voltage | 3.3 V DC |
| 4. Rated Current | 1.5 Amp |
| 5. Holding Torque | 0.62 Nm Typ. (Two phase on/rated current) |
| 6. Phase Resistance | 2.2 ohm±10% (20°C) |
| 7. Phase Inductance | 4.9 mH±20%(1kHz 1V rms) |
| 8. Rotor Inertia | 82 gcm ² |
| 9. Motor Weight | 0.36 kg |
| 10. Insulation Class | B (130°C) |

Label 1 Detail

STEPPING MOTOR

Insulation: Class B, 60VDC Max.

1.5Amps Holding: 0.62Nm

3000RPM Max.

PIVEXIN

UL FILE No. E465363 XXX

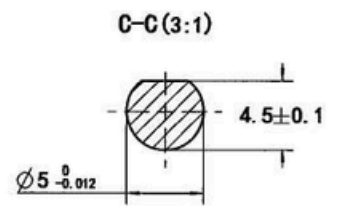
Factory ID

Label 2 Detail

TYPE MS17HD6P4150

XXXXXXXX YY/MM/DD

Work Order Date Format



| REV. | REVISION RECORD | DATE | UNLESS OTHERWISE SPECIFIED | NAMES | SIGNATURE | DATE | Drawing No: 4611110008904 | Rev. D1 | SCALE: 1:1 | Sheet 1 of 1 |
|------|---|------------|---|----------------|-----------|------|---|---------|------------|--------------|
| D1 | ECR: 23-317 | 2023.03.29 | Unit:mm First angle method Tolerances for linear and angular dimensions without individual tolerance indications GB/T 1804-m eqv ISO 2768-1:m Geometrical tolerance for features without individual tolerance indications GB/T 1184-K eqv ISO 2768-2:K | Approve | | | <div style="text-align: center;"> <h1>PIVEXIN</h1> <h2>TECHNOLOGY</h2> </div> | | | |
| D0 | Update nameplate | 2017.04.24 | | Standardize | | | | | | |
| C0 | 620mNm Min, change the nameplate | 2013.01.24 | | Process Review | | | | | | |
| B0 | change resistance, inductance and voltage | 2012.03.15 | | Check | | | | | | |
| A0 | Original revision | 2011.07.18 | Design | | | | | | | |